



A&N CORPORATION

High Vacuum Manufacturers Since 1965



TRI-SEAL

C A T A L O G

Vacuum Technology Distribution

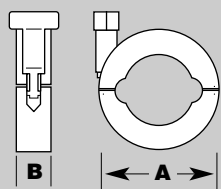


TRI-SEAL FLANGE SYSTEM

	Page
INTRODUCTION	1-2
CLAMPS:	
HINGED QUICK CLAMP TYPE 3/4" - 2"	
Aluminum - Elastomer Seal Only	3
Aluminum - Stainless Trim - Elastomer or Metal Seal	3
All Stainless - Elastomer or Metal Seal High Heat	3
SEALS:	
METAL	
3/4" - 2" Aluminum	5
3/4" - 2" Copper	5
3/4" - 2" Stainless Steel	6
ELASTOMER	
3/4" - 2" Stainless/Viton	5
3/4" - 2" Stainless/Buna N	5
3/4" - 2" Stainless/Silicone	5
ADAPTIVE ELASTOMER SEAL	
3/4" - 2" Stainless/Viton	4
3/4" - 2" Stainless/Buna N	4
3/4" - 2" Stainless/Silicone	4
REPLACEMENT "O" RINGS	
3/4" - 2" Viton	5
3/4" - 2" Buna N	5
3/4" - 2" Silicone	5
Replacement "O" Ring, Adaptive Seals	5
FLANGES:	
QUICK CLAMP STYLE	
Short Weld Flange, 3/4" - 2"	3
Long Butt Flange, 1/2" - 2"	3
Unbored Stub Flange, 3/4" - 2"	4
Blank Flange, 3/4" - 2"	4
Reducer Weld Flange, 1/2" - 2"	4
ADAPTORS:	
Tri-Seal to Female 1/8" NPT	6
Tri-Seal to Female 1/4" NPT	7
Tri-Seal to Male Pipe 1/8" - 1" NPT	6
Tri-Seal to Plastic or Rubber Hose	6
Tri-Seal to Quick Coupling 1/4" - 2"	7
Tri-Seal to CF Flange	7
Tri-Seal to ASA Flange with Groove	8
Tri-Seal to ASA Flange without Groove	8
Tri-Seal to LF (MF) ISO Universal Flange	8
Tri-Seal to Welch Pump Adaptor	8
Tri-Seal Reducers - Stainless Steel	9
Tri-Seal Nipples (Straight Sections)	9
TRI-SEAL FLEXIBLE SECTIONS:	
Bellows, 3/4" - 2"	9
Thin Wall Stainless Hose - 10", 20" and 40" Lengths	9
Clear Reinforced PVC Hose	9
TRI-SEAL 45° ELBOWS:	
3/4" - 2"	10
TRI-SEAL 90° ELBOWS:	
3/4" - 2"	10
TRI-SEAL 180° RETURN:	
3/4" - 2"	10
TRI-SEAL TEES:	
3/4" - 2"	10
TRI-SEAL CROSSES:	
3/4" - 2"	10



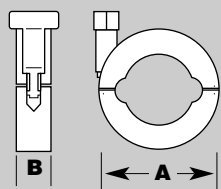
TRI-SEAL CLAMPS



- Tri-Seal clamp with hex nut and ss/trim, 3/4" - 2"
- For elastomer or metal seal

QUICK FLANGE ALUMINUM CLAMP ALL STAINLESS TRIM & HEX NUT

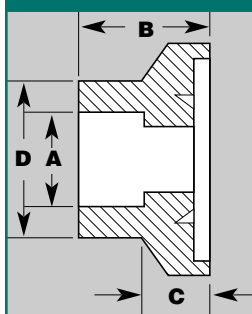
PART NUMBER	TUBE SIZE	A		B	UNIT PRICE
TS16-075-C	1/2" & 3/4"	2"	5/8		
TS25-100-C	1"	2 1/2"	5/8		
TS40-150-C	1 1/2"	3 3/4"	3/4		
TS50-200-C	2"	4 1/4"	7/8		



- Tri-Seal clamp -all stainless steel with hex nut, 3/4" - 2"
- For elastomer or metal seal
- High temperature - ultra high vacuum applications

QUICK FLANGE STAINLESS STEEL CLAMP

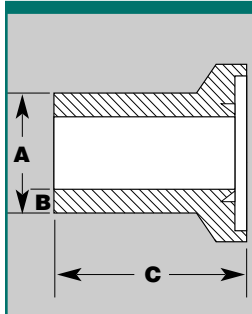
PART NUMBER	TUBE SIZE	A		B	UNIT PRICE
TS16-075-SC	1/2" & 3/4"	2"	5/8		
TS25-100-SC	1"	2 1/2"	5/8		
TS40-150-SC	1 1/2"	3 3/4"	3/4		
TS50-200-SC	2"	4 1/4"	7/8		



- 304 Stainless
- Internal weld
- Self aligning
- Accepts standard tubing

SHORT WELD FLANGE

PART NUMBER	TUBE SIZE	A		SET BACK		UNIT PRICE
		B	C	D		
TS16-075-SF	3/4"	.760	.500	.200	.875	
TS25-100-SF	1"	1.010	.500	.200	1.250	
TS40-150-SF	1 1/2"	1.510	.500	.210	1.750	
TS50-200-SF	2"	2.010	.620	.225	2.250	



- 304 Stainless
- Usable as half nipple
- Butt weld

LONG BUTT FLANGE

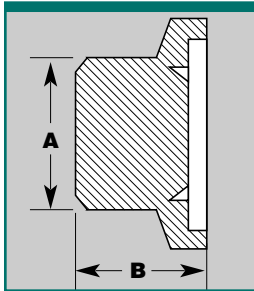
PART NUMBER	TUBE SIZE	A		C	UNIT PRICE
		B			
TS16-050-LF	1/2"	.500	.065	1.575	
TS16-075-LF	3/4"	.750	.065	1.575	
TS25-100-LF	1"	1.000	.065	1.575	
TS40-150-LF	1 1/2"	1.500	.065	1.575	
TS50-200-LF	2"	2.000	.065	1.575	

Vacuum Technology Distribution
 1003 Alvin Weinberg Drive
 Oak Ridge, Tennessee 37830
 TEL (865) 481 3342
 FAX (865) 481-3788
 www.vacuumtechnology.com

Sales Department 1-800-704-4774



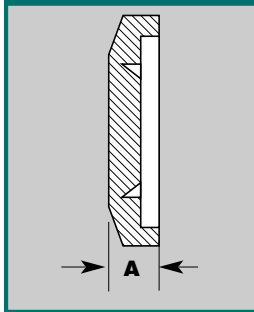
TRI-SEAL SEALS



- 304 Stainless steel
- Machine bore or tap to application
- May be welded

FLANGE - UNBORED STUB

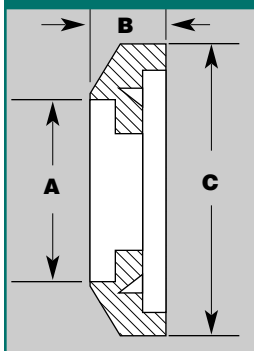
PART NUMBER			UNIT PRICE
	A	B	
TS16-075-US	.750	.500	
TS25-100-US	1.250	.500	
TS40-150-US	1.750	.500	
TS50-200-US	2.250	.620	



- 304 Stainless steel
- Not recommended for welding but may be modified (Use unbored stub)
- To close off unused ports

FLANGE - BLANK

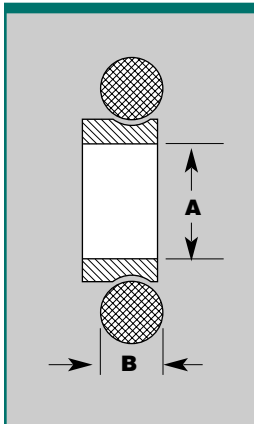
PART NUMBER			UNIT PRICE
	A		
TS16-075-SB	.3		
TS25-100-SB	.3		
TS40-150-SB	.3		
TS50-200-SB	.3		



- 304 Stainless steel
- Internal weld
- Accepts standard tubing
- Thin design

TRI-SEAL REDUCER WELD FLANGE

PART NUMBER	TUBE SIZE				UNIT PRICE
		A	B	C	
TS25x10-050	1"x1/2"	.510	.300	1.57	
TS25x16-075	1"x3/4"	.760	.300	1.57	
TS40x16-075	1 1/2"x3/4"	.760	.300	2.16	
TS40x25-100	1 1/2"x1"	1.010	.300	2.16	
TS50x25-100	2"x1"	1.010	.300	2.95	
TS50x40-150	2"x1 1/2"	1.510	.300	2.95	



- 304 Stainless
- Replaceable "O" ring
- Adapts Tri-Seal to ISO
- Buna "N" - 100° C Max.
- Viton - 200° C Max.
- Silicone - 200° C Max. Chemically resistant

ADAPTIVE ELASTOMER SEAL ASSEMBLY 3/4" - 2"

PART NUMBER	ADD SUFFIX TO ORDER					PRICE		
	VITON	BUNA	SILICONE	A	B	VITON	BUNA	SILICONE
TSxISO16-AES	V	B	S	.63	.139			
TSxISO25-AES	V	B	S	.98	.139			
TSxISO40-AES	V	B	S	1.57	.139			
TSxISO50-AES	V	B	S	1.97	.139			



Vacuum Technology Distribution

1003 Alvin Weinberg Drive
Oak Ridge, Tennessee 37830
TEL (865) 481 3342
FAX (865) 481-3788
www.vacuumtechnology.com

Sales Department 1-800-704-4774

Most Major Cards Accepted





TRI-SEAL SEALS

- 304 Stainless steel
- Replacement "O" ring
- Buna "N" - 100° C Max.
- Viton - 200° C Max.
- Silicone - 200° C Max. Chemically resistant

ELASTOMER SEAL ASSEMBLY

PART NUMBER	ADD SUFFIX TO ORDER			A	B	PRICE		
	VITON	BUNA	SILICONE			VITON	BUNA	SILICONE
TS16-075-ES	V	B	S	.650	.140			
TS25-100-ES	V	B	S	.950	.140			
TS40-150-ES	V	B	S	1.510	.140			
TS50-200-ES	V	B	S	2.010	.210			

- Buna "N" - 100° C Max.
- Viton - 200° C Max.
- Silicone - 200° C Max. Chemically resistant

REPLACEMENT "O" RINGS - ELASTOMER SEALS

PART NUMBER	ADD SUFFIX TO ORDER			STD. #	A	B	PRICE		
	VITON	BUNA	SILICONE				VITON	BUNA	SILICONE
TS16-075-O	V	B	S	2-210	.139	.73			
TS25-100-O	V	B	S	2-215	.139	1.04			
TS40-150-O	V	B	S	2-223	.139	1.60			
TS50-200-O	V	B	S	2-227	.139	2.10			

ADAPTIVE SEAL

TSxISO16-O	V	B	S	2-312	.139	.60			
TSxISO25-O	V	B	S	2-317	.139	.91			
TSxISO40-O	V	B	S	2-325	.139	1.97			
TSxISO50-O	V	B	S	2-329	.139	1.97			

- Preserves integrity of internal sealing groove for multiple flange uses.
- Frequent replacement of seal recommended.

METAL SEALS - ALUMINUM

PART NUMBER	A	UNIT PRICE
TS16-075-MS-A	.75	
TS25-100-MS-A	1.00	
TS40-150-MS-A	1.50	
TS50-200-MS-A	2.00	

- Preserves integrity of internal sealing groove for multiple flange uses.
- Frequent replacement of seal recommended.

METAL SEALS - COPPER

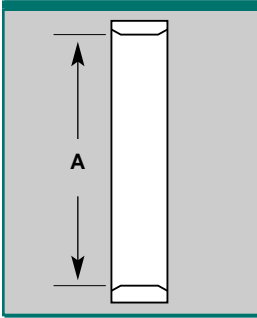
MODEL NUMBER	A	UNIT PRICE
TS16-075-MS-C	.75	
TS25-100-MS-C	1.00	
TS40-150-MS-C	1.50	
TS50-200-MS-C	2.00	

Vacuum Technology Distribution
 1003 Alvin Weinberg Drive
 Oak Ridge, Tennessee 37830
 TEL (865) 481 3342
 FAX (865) 481-3788
 www.vacuumtechnology.com

Sales Department 1-800-704-4774



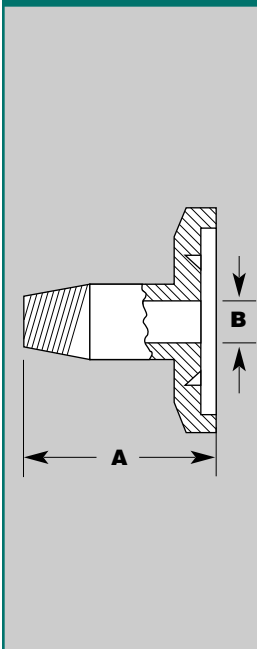
TRI-SEAL SEALS/ADAPTORS



- Best suited for highly corrosive applications
- Recommended for cryogenic applications
- Not recommended for multiple uses.

METAL SEALS - 304 STAINLESS STEEL

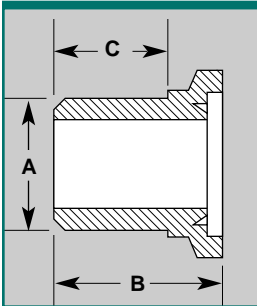
MODEL NUMBER	A	UNIT PRICE
TS16-075-MS-S	.75	
TS25-100-MS-S	1.00	
TS40-150-MS-S	1.50	
TS50-200-MS-S	2.00	



- Stubs have male 1/8" to 1" NPT threads
- 304 Stainless steel
- Slabbed for wrench
- Teflon tape recommended to seal thread

TRI-SEAL TO MALE ADAPTOR - 304 STAINLESS STEEL

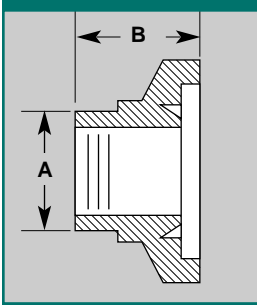
PART NUMBER	A	B	UNIT PRICE
TS16X12NPT	1.57	.255	
TS16X25NPT	1.97	.360	
TS25X12NPT	1.57	.255	
TS25X25NPT	1.97	.360	
TS25X50NPT	2.95	.625	
TS25X75NPT	2.95	.825	
TS40X12NPT	1.57	.255	
TS40X25NPT	1.97	.360	
TS40X50NPT	2.95	.625	
TS40X75NPT	2.95	.825	
TS40X100NPT	2.95	1.050	
TS50X12NPT	1.57	.255	
TS50X25NPT	1.97	.360	
TS50X50NPT	2.95	.625	
TS50X75NPT	2.95	.825	
TS50X100NPT	2.95	1.050	



- 304 Stainless steel
- Tri-Seal to PVC or rubber hose

HOSE ADAPTOR - STAINLESS STEEL

PART NUMBER	HOSE SIZE	A	B	C	UNIT PRICE
TS16-050-SH	1/2"	.500	1.260	.790	
TS16-075-SH	3/4"	.750	1.260	.790	
TS25-100-SH	1"	1.000	1.500	1.020	
TS40-150-SH	1 1/2"	1.500	1.970	1.500	
TS50-200-SH	2"	2.000	2.170	1.610	



- 304 Stainless steel
- 1/8" NPT female thread
- Fits most thermocouple gauges

TRI-SEAL - ADAPTOR TO 1/8" NPT

PART NUMBER	A	B	UNIT PRICE
TS16-075-SP12	.62	.500	
TS25-100-SP12	.88	.500	
TS40-150-SP12	1.25	.500	
TS50-200-SP12	1.75	.620	

Vacuum Technology Distribution
 1003 Alvin Weinberg Drive
 Oak Ridge, Tennessee 37830
 TEL (865) 481 3342
 FAX (865) 481-3788
 www.vacuumtechnology.com

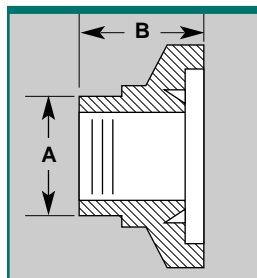
Sales Department 1-800-704-4774

Most Major Cards Accepted





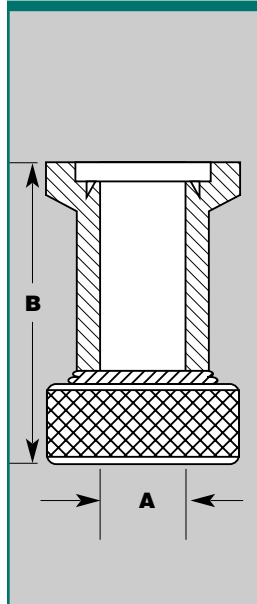
TRI-SEAL ADAPTORS



- 304 Stainless steel
- 1/4" NPT female thread

TRI-SEAL - ADAPTOR TO 1/4" NPT

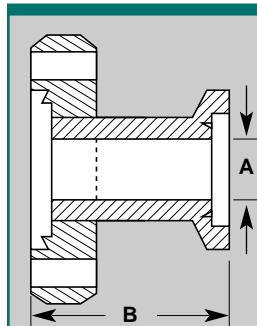
PART NUMBER	A	B	UNIT PRICE
TS16-075-SP25	.62	.500	
TS25-100-SP25	.88	.500	
TS40-150-SP25	1.25	.500	
TS50-200-SP25	1.75	.620	



- A&N Compression type quick connect for tube connections
- Stainless steel
- "O" Ring
- Use with tubulated gauges

TRI-SEAL TO QUICK COUPLING 304 STAINLESS STEEL

PART NUMBER	TUBING SIZE	A	B	UNIT PRICE
TS16-075-Q25	1/4"	.265	1.4	
TS16-075-Q50	1/2"	.515	1.5	
TS16-075-Q75	3/4"	.765	1.8	
TS25-100-Q50	1/2"	.515	1.5	
TS25-100-Q75	3/4"	.765	1.8	
TS25-100-Q100	1"	1.015	2.0	
TS40-150-Q50	1/2"	.515	1.5	
TS40-150-Q75	3/4"	.765	1.8	
TS40-150-Q100	1"	1.015	2.0	
TS40-150-Q112	1 1/8"	1.140	2.0	
TS40-150-Q150	1 1/2"	1.515	2.4	
TS50-200-Q75	3/4"	.765	1.8	
TS50-200-Q100	1"	1.015	2.0	
TS50-200-Q112	1 1/8"	1.140	2.0	
TS50-200-Q150	1 1/2"	1.515	2.4	
TS50-200-Q200	2"	2.015	2.875	



TRI-SEAL TO CF FLANGE

PART NUMBER	A	B	UNIT PRICE
TS16-075x133	1.750	.625	
TS16-075x275	1.780	.625	
TS25-100x275	1.780	.875	
TS40-150x275	1.780	1.370	
TS40-150x338	1.800	1.370	
TS50-200x450	1.950	1.875	

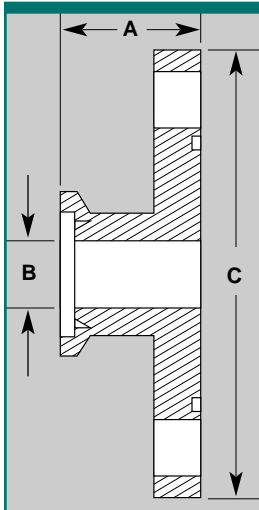


Sales Department 1-800-704-4774

Vacuum Technology Distribution
 1003 Alvin Weinberg Drive
 Oak Ridge, Tennessee 37830
 TEL (865) 481 3342
 FAX (865) 481-3788
www.vacuumtechnology.com



TRI-SEAL FLANGES

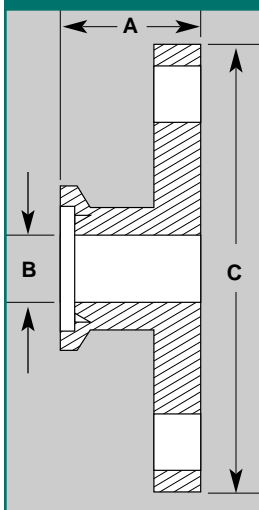


- 304 Stainless steel
- Helium leak checked
- Tri-Seal to ASA
- Standard with "O" ring groove

TRI-SEAL TO ASA FLANGE WITH "O" RING GROOVE

MODEL NUMBER	A	B	C	UNIT PRICE
TS40x150ASA-G	1.810	1.330	5.00	
TS40x200ASA-G	1.810	1.330	6.00	
TS40x300ASA-G	1.810	1.330	7.50	
TS50x150ASA-G	1.810	1.830	5.00	
TS50x200ASA-G	1.810	1.830	6.00	
TS50x300ASA-G	1.810	1.830	7.50	

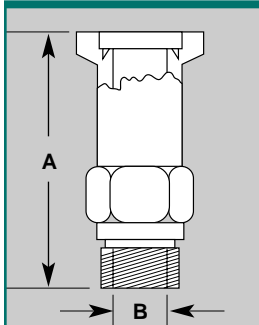
"O" Ring Groove - 1 1/2" ASA, 2.66 I.D. (2-231)
 "O" Ring Groove - 2" ASA, 3.42 I.D. (2-327)
 "O" Ring Groove - 3" ASA, 4.69 I.D. (2-247)
 "O" Ring Groove - 4" ASA, 6.10 I.D. (2-258)
 "O" Ring Groove - 6" ASA, 7.90 I.D. (2-265)



- 304 Stainless steel
- Helium leak checked
- Tri-Seal to ASA
- Standard without "O" ring groove

TRI-SEAL TO ASA FLANGE WITHOUT "O" RING GROOVE

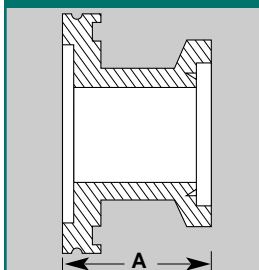
MODEL NUMBER	A	B	C	UNIT PRICE
TS40x150ASA	1.810	1.330	5.00	
TS40x200ASA	1.810	1.330	6.00	
TS40x300ASA	1.810	1.330	7.50	
TS50x150ASA	1.810	1.830	5.00	
TS50x200ASA	1.810	1.830	6.00	
TS50x300ASA	1.810	1.830	7.50	



- Replaces inlet hose connector
- Stainless steel
- Includes metal gasket

ADAPTOR - WELCH PUMP

MODEL NUMBER	FOR USE WITH WELCH PUMP NO.	A	B	UNIT PRICE
TS16-075-WP1	1399, 1400, 1410	1.77	.45	
TS16-075-WP2	1405	2.56	.562	
TS25-100-WP1	1380, 1402, 1403, 8806, 8811, 8816, 8821	2.56	.562	
TS40-150-WP1	1373, 1376, 8831	2.56	1.125	
TS40-150-WP2	1374, 1397, 8851	2.56	1.375	



- 304 Stainless steel
- Helium leak checked
- Tri-Seal to ISO LF (MF)
- Other sizes & combinations of material available

TRI-SEAL TO ISO (MF) FLANGE

MODEL NUMBER	A	UNIT PRICE
TS40xLF63	1.825	
TS50xLF63	1.825	
TS50xLF80	1.825	
TS50xLF100	1.825	

Vacuum Technology Distribution
 1003 Alvin Weinberg Drive
 Oak Ridge, Tennessee 37830
 TEL (865) 481 3342
 FAX (865) 481-3788
 www.vacuumtechnology.com

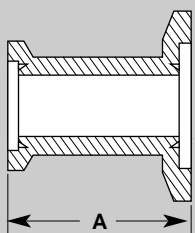
Sales Department 1-800-704-4774

Most Major Cards Accepted





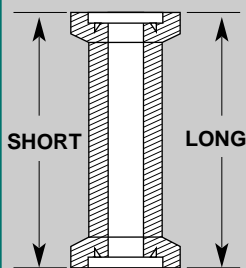
TRI-SEAL FLEXIBLE SECTIONS



- Mates different Tri-Seal sizes
- 304 Stainless steel

TRI-SEAL REDUCERS

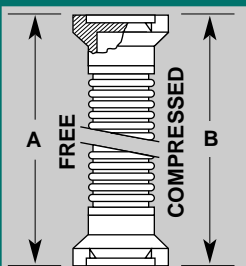
PART NUMBER	A	UNIT PRICE
TS25x16	1.75	
TS40x16	1.75	
TS50x16	1.75	
TS40x25	1.75	
TS50x25	1.75	
TS50x40	1.75	



- 304 Stainless steel
- Special lengths to order

TRI-SEAL NIPPLES - STAINLESS STEEL

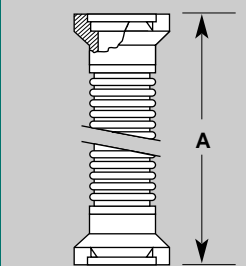
PART NUMBER	SHORT	LONG	UNIT PRICE
TS16-075-NS	3.15		
TS16-075-NL		12.60	
TS25-100-NS	3.94		
TS25-100-NL		12.60	
TS40-150-NS	5.12		
TS40-150-NL		12.60	
TS50-200-NS	5.51		
TS50-200-NL		12.60	



- 304 Stainless steel
- Special lengths to order

TRI-SEAL TO STAINLESS BELLOWS

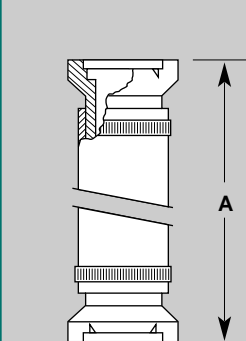
PART NUMBER	A	B	UNIT PRICE
TS16-075-F	3.94	3.07	
TS25-100-F	3.94	3.07	
TS40-150-F	3.94	2.93	
TS50-200-F	3.94	3.11	



- Unsheathed 304 Stainless steel
- Special lengths to order

TRI-SEAL TO FLEXIBLE METAL HOSE THIN WALL

PART NUMBER	ADD SUFFIX FOR PROPER LENGTH		
	10"	20"	40"
TS16-075-MH			
TS25-100-MH			
TS40-150-MH			
TS50-200-MH			



- PVC tubing
- Clear, wire reinforced
- 304 Stainless steel flanges
- Hoses clamped on flange
- Ready to use, helium leak checked
- Good for exhaust lines
- Special lengths available

TRI-SEAL TO PVC TUBING 20" & 40" LENGTHS

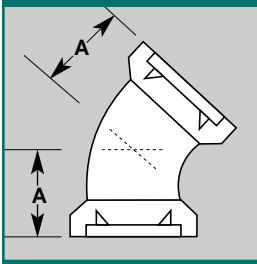
PART NUMBER	A	UNIT PRICE
TS16-075-PVC20	20"	
TS16-075-PVC40	40"	
TS25-100-PVC20	20"	
TS25-100-PVC40	40"	
TS40-150-PVC20	20"	
TS40-150-PVC40	40"	
TS50-200-PVC20	20"	
TS50-200-PVC40	40"	

Vacuum Technology Distribution
 1003 Alvin Weinberg Drive
 Oak Ridge, Tennessee 37830
 TEL (865) 481 3342
 FAX (865) 481-3788
 www.vacuumtechnology.com

Sales Department 1-800-704-4774



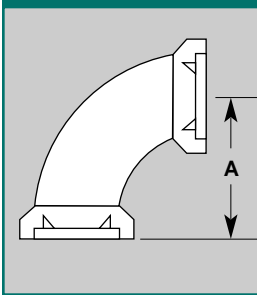
TRI-SEAL ELBOWS, TEES & CROSSES



■ 304 Stainless steel

TRI-SEAL TO 45° ELBOW

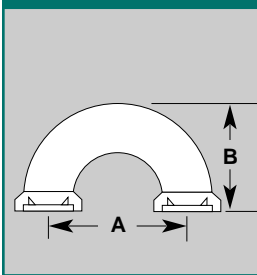
MODEL NUMBER	A	UNIT PRICE
TS16-075-E45	.910	
TS25-100-E45	1.12	
TS40-150-E45	1.68	
TS50-200-E45	1.99	



■ 304 Stainless steel

TRI-SEAL TO 90° ELBOW

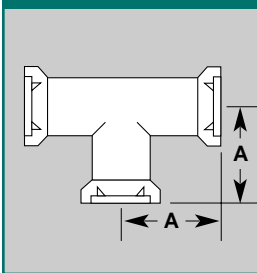
MODEL NUMBER	A	UNIT PRICE
TS16-075-E90	1.57	
TS25-100-E90	1.97	
TS40-150-E90	2.56	
*TS50-200-E90	2.76	
*MITERED STYLE		



■ 304 Stainless steel

TRI-SEAL 180° RETURN

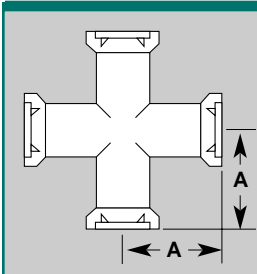
MODEL NUMBER	A	B	UNIT PRICE
TS16-075-E180	2.250	1.67	
TS25-100-E180	3.000	2.17	
TS40-150-E180	4.500	3.17	
TS50-200-E180	6.000	4.17	



■ 304 Stainless steel

TRI-SEAL TEES

MODEL NUMBER	A	UNIT PRICE
TS16-075-T	1.57	
TS25-100-T	1.97	
TS40-150-T	2.56	
TS50-200-T	2.76	



■ 304 Stainless steel

TRI-SEAL 4 WAY CROSSES

MODEL NUMBER	A	UNIT PRICE
TS16-075-X	1.57	
TS25-100-X	1.97	
TS40-150-X	2.56	
TS50-200-X	2.76	



Vacuum Technology Distribution

1003 Alvin Weinberg Drive
Oak Ridge, Tennessee 37830
TEL (865) 481 3342
FAX (865) 481-3788
www.vacuumtechnology.com

Sales Department 1-800-704-4774

Most Major Cards Accepted

